



## Unit 12. Stree Prajanananga Nirmana and Vikruti Topic A: Development of the Female Reproductive System from the Müllerian Duct and Its Anomalies

### Unit 12A: Development of the Female Reproductive System from the Müllerian Duct and Its Anomalies

#### Learning Goals

By the end of this lesson, you should be able to:

1. trace the embryological development of the female tract from the Müllerian (paramesonephric) ducts,
2. list the normal derivatives of the Müllerian system and structures **not** derived from it,
3. explain how defects at specific steps (formation, fusion, canalisation, resorption, vertical fusion) lead to distinct anomalies,
4. classify congenital uterine anomalies (CUA) using commonly used systems, and
5. recognise key clinical features, imaging findings, reproductive implications and management principles for each anomaly.

The female reproductive system develops from an indifferent embryo via **Müllerian ducts** in the absence of testosterone, forming the uterus, fallopian tubes, and vagina. Ovaries also differentiate from the gonadal ridges, producing eggs that are arrested until puberty. Puberty, triggered by the pituitary gland releasing hormones, stimulates the ovaries to produce estrogen, leading to sexual maturity and the start of the menstrual cycle with the release of eggs.

#### Embryological Development (Fetal Life)

- **Initial Stage:**The development begins around 6 weeks of gestation with two pairs of undifferentiated duct systems: the Wolffian ducts and the Müllerian ducts.
- **Müllerian Duct Development:**In the absence of male hormones (like testosterone), the Müllerian ducts develop and form the female reproductive organs.
- **Organ Formation:**The two Müllerian ducts grow, fuse in the midline, and develop into the uterus, fallopian tubes, and upper part of the vagina.
- **Ovarian Development:**The gonadal ridges develop into the ovaries, which start to form immature egg cells (oocytes).

#### Development in Adolescence (Puberty)

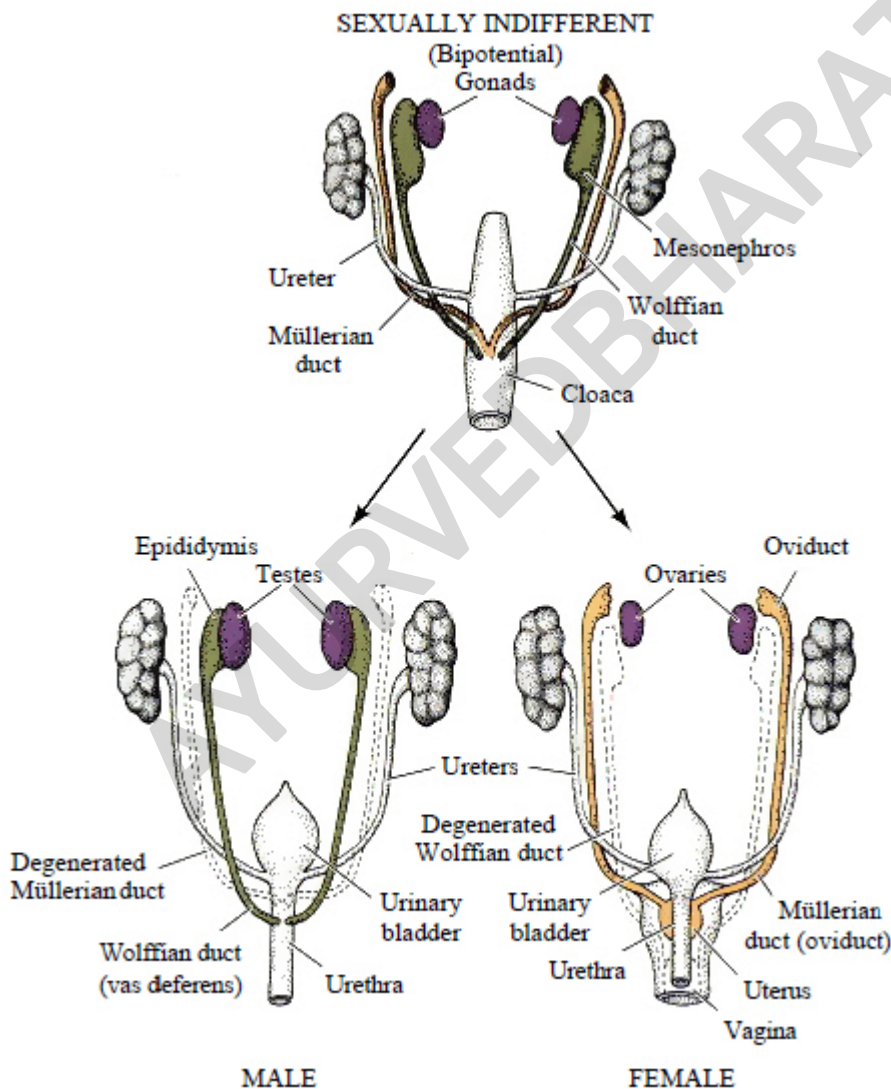
- **Hormonal Trigger:**The pituitary gland, located in the brain, begins to produce hormones that signal the ovaries to start making female sex hormones, especially estrogen.
- **Sexual Maturation:**The rise in estrogen levels causes the physical changes associated with sexual maturity.
- **Menstrual Cycle:**Near the end of puberty, the ovaries begin releasing eggs monthly through a process called the menstrual cycle. The first period is called menarche.

#### Key Factors and Considerations

- **Hormonal Influence:**The presence or absence of the male hormone testosterone is crucial for determining whether the reproductive system develops along male or female lines.
- **Environmental Factors:**Genetics, nutrition, and other environmental factors can influence the age at which puberty begins and the overall development of the system.
- **Associated Structures:**The female reproductive tract develops alongside the urinary tract and other organs, so developmental differences can sometimes affect these other areas as well.

## 1) Embryological Overview (Weeks 5-20)

- **Embryonic origin:** Intermediate mesoderm → urogenital ridge. Two paired ducts develop: **mesonephric (Wolffian)** and **paramesonephric (Müllerian)**.
- **Sex determination:** In genetic females (46,XX), **no Anti-Müllerian Hormone (AMH)** is present; Müllerian ducts **persist** and differentiate. In males, Sertoli-cell AMH causes Müllerian regression.
- **Timeline (approximate):**
  - **Week 5-6:** Coelomic epithelium invaginates lateral to mesonephros to form **Müllerian ducts** cranially open to the coelom (future fimbrial ostia).
  - **Week 7-9:** Caudal migration **medial to mesonephric ducts; crossing and midline fusion** into a single **uterovaginal primordium**.
  - **Week 9-12:** **Canalisation** of ducts begins; **contact with urogenital sinus** forms the **Müllerian tubercle** and induces **sinovaginal bulbs**.
  - **Week 12-20:** **Resorption of the midline septum** within the fused portion → single endometrial cavity; **vaginal plate canalises** from cranial (Müllerian) and caudal (sinovaginal) components; **hymen** remains as a thin membrane.



## Molecular patterning

- **WNT4**: essential for Müllerian development and ovarian differentiation; loss can cause Müllerian aplasia with virilisation.
- **HOXA genes**: segmental identity—**HOXA10** (uterine body), **HOXA11** (lower uterine segment/cervix), **HOXA13** (upper vagina).
- **PAX2, LHX1 (LIM1)**: early duct formation and maintenance.  
Understanding these explains why defects can be region-specific.

## 2) What the Müllerian Ducts Form—and What They Do Not

Structure	Embryological source
<b>Fallopian tubes</b> (oviducts)	Unfused cranial Müllerian ducts (infundibulum, ampulla, isthmus)
<b>Uterus (garbhāśaya)</b>	Fused Müllerian ducts (uterovaginal primordium); myometrium from surrounding mesenchyme
<b>Cervix</b>	Caudal part of fused Müllerian ducts
<b>Upper 2/3 of vagina (yoni-mārga)</b>	Müllerian contribution (uterovaginal primordium)
<b>Lower 1/3 of vagina + hymen</b>	<b>Urogenital sinus</b> (endoderm) via sinovaginal bulbs and vaginal plate
<b>Ovaries</b>	<b>NOT Müllerian</b> : arise from <b>gonadal ridge</b> (mesenchyme) with primordial germ cells
<b>External genitalia</b> (labia, clitoris)	<b>NOT Müllerian</b> : from genital tubercle/folds (ectoderm & mesenchyme)

**High-yield point:** Ovaries and lower vagina are **not** Müllerian; this explains why some anomalies present with a normal ovary and external genitalia but absent uterus/upper vagina.

## 3) Step-by-Step Normal Development

1. **Initiation and elongation:** Coelomic epithelium invaginates to form paired Müllerian ducts that grow caudally alongside mesonephric ducts.
2. **Cranial patency:** Cranial ends remain open to the coelomic cavity → future fimbrial ostia.
3. **Midline fusion:** Caudal ends fuse to form the **uterovaginal canal**.
4. **Canalisation:** Lumen forms within each duct and within the fused canal.
5. **Septal resorption:** The midline septum between the fused ducts is resorbed to create a single uterine cavity and cervix.
6. **Vertical fusion:** The uterovaginal canal meets the urogenital sinus at the **Müllerian tubercle**; sinovaginal bulbs form a **vaginal plate** which later canalises, leaving the hymen.

**Defect at any step → predictable anomaly**, reviewed below.

## 4) Congenital Anomalies: Concepts and Pathogenesis

Congenital Müllerian anomalies (also called congenital uterine anomalies, CUA) occur in ~4-7% of the general population, with higher prevalence among women with infertility, recurrent pregnancy loss, or adverse obstetric outcomes. **Renal tract anomalies** co-exist in up to **20-30%**, due to shared embryological origin—hence the need to image kidneys whenever a Müllerian anomaly is identified.

### Grouping by the stage that fails

- **Formation (agenesis/hypoplasia):** Partial or complete absence of Müllerian derivatives—e.g., **MRKH**

(Mayer-Rokitansky-Küster-Hauser) syndrome: absent/ rudimentary uterus and upper vagina, normal ovaries/karyotype (46,XX).

- **Fusion defects (lateral fusion):** Failure of ducts to fuse → **uterus didelphys** (double uteri/cervices ± longitudinal vaginal septum), or **bicornuate uterus** (partial fusion failure, heart-shaped fundus).
- **Canalisation defects:** Poor lumen formation—may cause **transverse vaginal septum**.
- **Resorption defects (septal resorption):** Persistence of a midline septum → **septate uterus** (complete or partial septum).
- **Vertical fusion defects:** Failed junction between Müllerian cranial vagina and sinus-derived caudal vagina → **imperforate hymen, transverse vaginal septum** (functional outflow obstruction).
- **Dysmorphic uterine cavity:** e.g., **T-shaped uterus** classically linked to in-utero diethylstilbestrol (DES) exposure (rare today); may also be idiopathic.

## 5) Common Classification Systems

### (A) ASRM/AFS (classic)

- **Class I:** Hypoplasia/Agenesis (e.g., MRKH)
- **Class II:** Unicornuate uterus (± rudimentary horn)
- **Class III:** Uterus didelphys
- **Class IV:** Bicornuate uterus
- **Class V:** Septate uterus
- **Class VI:** Arcuate uterus (mild indentation; often considered a normal variant)
- **Class VII:** DES-related anomalies (T-shaped)

### (B) ESHRE/ESGE (2013; widely cited)

- **U0:** Normal uterus (includes minor variants)
- **U1:** Dysmorphic uterus (e.g., T-shaped)
- **U2:** Septate uterus
- **U3:** Bicornuate uterus (bicornuate spectrum)
- **U4:** Hemi-uterus (unicornuate)
- **U5:** Aplastic uterus (± rudimentary cavity)
- **U6:** Unclassified

**Exam tip:** Know **both** schemes and be able to map common entities.

## 6) Distinguishing Key Anomalies (Diagnosis and Imaging)

**Preferred imaging:** 3D transvaginal ultrasound (3D-TVS) and **MRI** (gold standard in complex cases). Hysterosalpingography (HSG) shows the **internal cavity** but not the **fundal contour**; laparoscopy directly assesses the **external fundus** and may be combined with hysteroscopy for diagnosis + treatment.

### Septate vs Bicornuate vs Didelphys

Feature	Septate uterus	Bicornuate uterus	Uterus didelphys
Embryological error	<b>Failure of septal resorption</b>	<b>Partial fusion failure</b>	<b>Complete fusion failure</b>
External fundal contour	<b>Normal/flat</b> or shallow indentation	<b>Deep fundal cleft</b> (external indentation)	<b>Two separate hemi-uteri with deep fundal cleft</b>
Cervix	Usually <b>single</b>	Usually <b>single</b> (bicornuate unicollis) or <b>double</b> (bicornuate bicollis)	<b>Double cervix</b>

Feature	Septate uterus	Bicornuate uterus	Uterus didelphys
Vagina	Usually single	Often single	Often <b>longitudinal vaginal septum</b> present
Diagnosis key	Normal fundal contour on MRI/3D-TVS with internal septum	External fundal indentation; intercornual distance widened	Two distinct uteri and cervixes; "double" appearance
Management	<b>Hysteroscopic septal resection</b>	Selected cases: <b>Strassman metroplasty</b> (rare, for adverse obstetric history)	Usually <b>no unification surgery</b> ; resect obstructing vaginal septum if present

## 7) Major Anomalies—Clinical, Imaging, Management

### 7.1 MRKH (Müllerian agenesis; Class I / U5)

- **Anatomy:** Absent/ rudimentary uterus; absent upper vagina; **normal ovaries**, normal secondary sexual characteristics, 46,XX.
- **Presentation:** **Primary amenorrhoea** with normal thelarche and adrenarche; sometimes renal (agenesis, ectopia) or skeletal anomalies.
- **Investigations:** MRI pelvis; abdominal/renal ultrasound.
- **Management:** **Non-surgical vaginal dilation** (first-line) or **vaginoplasty** (McIndoe, Vecchietti) when needed; reproductive options include **gestational surrogacy** or **uterus transplant** (select centres). Psychological support essential.

### 7.2 Unicornuate uterus (Class II / U4)

- **Pathogenesis:** Agenesis of one duct → **hemi-uterus**; may have a **rudimentary horn** (with or without cavity, communicating or non-communicating).
- **Risks:** Infertility, miscarriage, **preterm birth**, **malpresentation**; **rudimentary horn pregnancy** (life-threatening rupture).
- **Management:** **Surgical excision of a non-communicating functional rudimentary horn**; high-risk antenatal surveillance in pregnancy.

### 7.3 Uterus didelphys (Class III / typically U3 if both corpora fully separate)

- **Anatomy:** Two separate uteri and cervixes; frequently a **longitudinal vaginal septum** (dyspareunia, obstructive symptoms if asymmetric).
- **Outcomes:** Often reasonable fertility; increased **miscarriage/preterm** risk.
- **Management:** Usually **conservative**; resect an obstructive vaginal septum. Unification surgery rarely indicated.

### 7.4 Bicornuate uterus (Class IV / U3—bicorporeal)

- **Anatomy:** Single cervix (unicollis) or double cervix (bicollis) with **deep external fundal cleft**.
- **Obstetric issues:** Miscarriage, preterm birth, malpresentation.
- **Management:** Conservative; in women with **recurrent pregnancy loss or extreme preterm** births attributable to the anomaly, **metroplasty (Strassman)** may be considered in selected centres. Cervical cerclage may be needed based on history/cervical length.

### 7.5 Septate uterus (Class V / U2)

- **Anatomy:** Normal external fundus; **internal septum** (fibromuscular) dividing the cavity—**complete** to the external os or **partial** (subseptate).
- **Reproductive impact:** **Highest rate of first-trimester miscarriage** among uterine anomalies; infertility association debated but often considered significant.
- **Management:** **Hysteroscopic septal resection** improves live-birth rates and reduces miscarriage.

## 7.6 Arcuate uterus (Class VI; normal variant in many schemas)

- **Anatomy:** Mild concavity at the fundus; **not associated** with significant adverse outcomes.
- **Management: No treatment.**

## 7.7 DES-related / T-shaped uterus (Class VII / U1 dysmorphic)

- **Anatomy:** Narrowed, T-shaped cavity; hypoplastic cervix. Today, most T-shaped cavities are **idiopathic**.
- **Presentation:** Infertility, recurrent loss, poor implantation.
- **Management: Hysteroscopic metroplasty** (lateral wall incisions) in selected symptomatic cases.

## 7.8 Transverse vaginal septum (vertical fusion/canalisation defect)

- **Site:** Upper, mid or lower vagina.
- **Presentation: Primary amenorrhoea with cyclical pain** (haematocolpos/haematometra), dyspareunia, obstructed labour.
- **Treatment: Surgical resection** with careful mucosal anastomosis; postoperative dilators to maintain patency.

## 7.9 Imperforate hymen (vertical fusion remnant)

- **Presentation:** Adolescents with primary amenorrhoea, cyclical pain, **bulging bluish membrane**, urinary retention.
- **Treatment: Cruciate incision hymenotomy** and drainage under asepsis.

## 8) Clinical Clues, Complications and Co-morbidities

- **Amenorrhoea + normal secondary sexual characteristics** → think **MRKH or outflow obstruction** (imperforate hymen, transverse septum).
- **Cyclical pain after menarche** without bleeding → **outflow obstruction** (non-communicating horn with endometrium, imperforate hymen).
- **Infertility/recurrent loss** → consider **septate** or **bicornuate** uterus; differentiate with imaging.
- **Pregnancy complications:** miscarriage (especially septate), **preterm labour, malpresentation, IUGR** in severe anomalies.
- **Associated anomalies: Renal** (agenesis, duplication), **skeletal** (vertebral, limb). Always screen kidneys.

## 9) Investigation Strategy

1. **Baseline pelvic ultrasound** (2D → 3D reconstruction if available).
2. **MRI pelvis** when diagnosis is uncertain or complex; best for fundal contour, cervical anatomy, rudimentary horn characterisation, and associated renal anomalies.
3. **HSG** for cavity outline and tubal patency (pre-surgery infertility workup), noting it **cannot define the external fundus**.
4. **Diagnostic hysteroscopy ± laparoscopy:** when intervention is planned (e.g., septal resection) or differentiation remains unclear.
5. **Renal ultrasound** in every confirmed Müllerian anomaly.

## 10) Management Principles

- **Correct only what is clinically relevant.** Not all anomalies require surgery.
- **Septate uterus:** hysteroscopic resection (safe, effective).
- **Non-communicating rudimentary horn** with functional endometrium: **laparoscopic excision** to prevent

endometriosis and rupture.

- **Obstructive vaginal anomalies** (transverse septum/imperforate hymen): **timely relief** with meticulous technique; maintain patency with dilators.
- **Bicornuate/didelphys**: major unification surgeries are **rare**; consider only for severe obstetric morbidity after multidisciplinary review.
- **MRKH**: staged **dilation** programmes first; surgery only when indicated; psychosocial support; discuss fertility options.
- **Antenatal care**: high-risk surveillance—cervical length monitoring, consider **cerclage** for proven cervical insufficiency, manage malpresentation (version/LSCS as indicated).

## 11) Ayurveda Correlation (for integrative understanding)

Classical texts describe the formation of the *yonī-mārga* and *garbhāśaya* as part of *śarīra* development, emphasising the coordinated contribution of maternal and paternal factors, diet (*āhara*), conduct (*vihāra*), and *daivavyapāśraya*. While the **modern embryological steps** above explain exact morphogenesis, the clinical emphasis on **preserving patency (āvāraṇa-nivṛtti)**, **preventing retained blood (rakta sanga)**, and ensuring **healthy conception and gestation** parallels the classical aims of *garbhāsaṁskāra*, *ṛtumati paricaryā*, and *prasava-saṁrakṣaṇa*. (Direct śloka quotation is not essential here because this is a modern embryology topic.)

## 12) Key Take-Home Points (Rapid Revision)

- Müllerian ducts form **fallopian tubes, uterus, cervix and upper vagina**; ovaries/external genitalia are **not** Müllerian.
- **Defect mapping** (formation, fusion, canalisation, resorption, vertical fusion) predicts the anomaly.
- **Septate vs bicornuate** hinges on **external fundal contour** (normal vs cleft).
- Always **screen kidneys** once a Müllerian anomaly is diagnosed.
- **Septal resection** is the commonest effective corrective procedure; major unification surgeries are uncommon today.
- Tailor management to symptoms, reproductive plans and obstetric history.

## Assessment

### A) MCQs (choose one best answer)

1. Upper two-thirds of the vagina develops from:  
A. Urogenital sinus B. Müllerian ducts C. Mesonephric ducts D. Cloaca  
**Answer: B. Rationale:** Upper 2/3 is Müllerian; lower 1/3 is sinus-derived.
2. The anomaly with **normal external fundus** but internal division of the cavity is:  
A. Bicornuate B. Didelphys C. Septate D. Unicornuate  
**Answer: C. Rationale:** Septate = resorption failure with normal fundal contour.
3. A 16-year-old girl has primary amenorrhoea, normal breast/axillary hair, and a blind-ending short vagina. Most likely diagnosis:  
A. Androgen insensitivity B. MRKH C. Turner syndrome D. Hypothalamic amenorrhoea  
**Answer: B. Rationale:** MRKH: absent uterus/upper vagina with normal secondary sexual characters.
4. Non-communicating rudimentary horn is dangerous because of:  
A. Cervical incompetence B. IUGR C. Horn pregnancy rupture D. Placenta accreta  
**Answer: C.**
5. First-line imaging to differentiate septate from bicornuate uterus:  
A. HSG B. 2D US only C. 3D-TVS or MRI D. CT scan



**Answer: C.**

6. Failure of **lateral fusion** of Müllerian ducts leads to:  
A. Septate uterus B. Uterus didelphys C. Arcuate uterus D. T-shaped uterus

**Answer: B.**

7. A painful bulging intact hymen in an adolescent with amenorrhoea suggests:  
A. Transverse septum B. Imperforate hymen C. MRKH D. Cervical atresia

**Answer: B.**

8. The congenital uterine anomaly most strongly linked with first-trimester miscarriage is:  
A. Bicornuate B. Septate C. Didelphys D. Arcuate

**Answer: B.**

9. In MRKH, the ovaries are:  
A. Absent B. Dysgenetic C. Normal and functional D. Virilised

**Answer: C.**

10. DES-related cavity shape classically is:  
A. Heart-shaped B. T-shaped C. Banana-shaped D. Pear-shaped

**Answer: B.**

### B) Short Answer Questions (write 3-5 lines each)

1. Enumerate normal derivatives of the Müllerian ducts.
2. Describe the embryological basis of a septate uterus.
3. Differentiate uterus didelphys from bicornuate uterus (two points).
4. Outline the evaluation of a patient with suspected MRKH.
5. Why should renal imaging be done in Müllerian anomalies?

### C) Long Answer Questions

1. **Describe** the development of the female reproductive tract from the Müllerian ducts, including timing, molecular cues (WNT4, HOXA), and contributions from the urogenital sinus. **Add a note** on structures not derived from Müllerian ducts.
2. **Classify** congenital Müllerian anomalies. **Explain** pathogenesis, clinical features, fertility/obstetric implications, diagnostic approach, and management of **septate uterus** and **bicornuate uterus**.

### D) Case-Based (OSCE-style) Prompt

A 24-year-old woman with two first-trimester miscarriages undergoes HSG showing two endometrial cavities. Describe how you would **differentiate** septate vs bicornuate uterus, list the **next best imaging**, and state **definitive management** if septate uterus is confirmed.

### Self-Check (2 minutes)

- Can you **name five** Müllerian anomalies and the **developmental step** that failed in each?
- Can you state **one key imaging sign** that distinguishes septate from bicornuate?
- Do you remember **which part of the vagina** is **not** Müllerian?

If yes, you are exam-ready for this topic.